

# Where is Mobile Learning Going?

Anna Trifonova and Marco Ronchetti

Dipartimento di Informatica e Telecomunicazioni  
Università degli Studi di Trento, Italy

## Defining M-Learning

- E-learning + mobile computing
  - PDA
  - Cell phones
  - ❖ Any small, autonomous and unobtrusive device
  
- M-learning can include anything from job aids and courseware downloaded on your personal digital assistant to Net-based, instructor-facilitated training via laptop



## Activities on mobile devices

- Interact with people
  - Voice
  - Written messages
  - Still and moving images
- Access content
  - Local
  - Remote
- Access services



## Current Research Activities

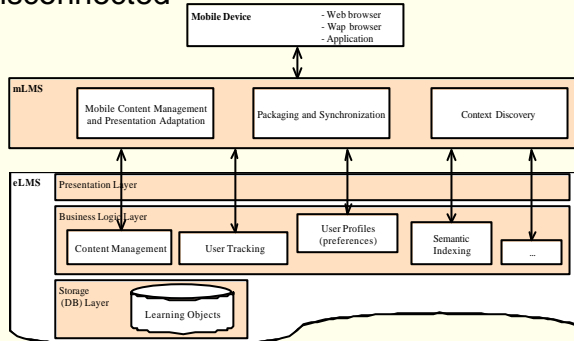
- Infrastructural Research
  - Small screens
  - Intermittent connection
  - Small or no keyboard
  - Context awareness
- Accessing Content
  - WAP courses/portals
  - Design special courses for PDAs
- Communicating and Interacting

## Guidelines for m-learning applications

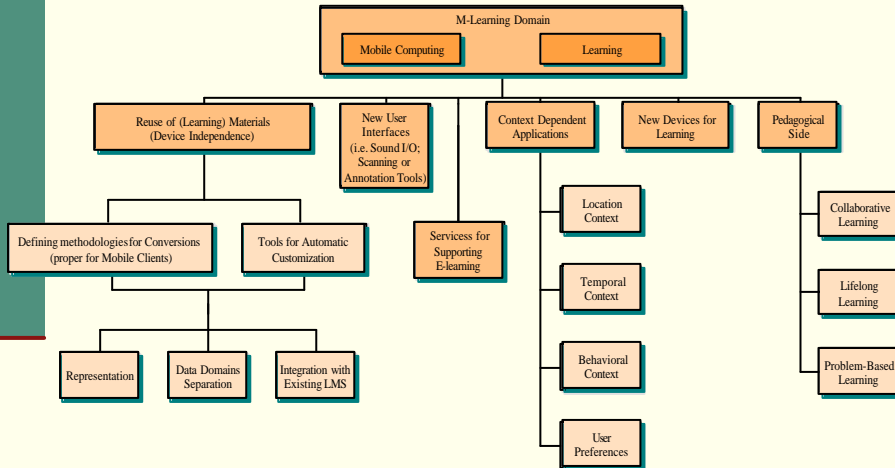
- **Short, not more that 5-10 minutes long modules**  
Users should be able to use their small fragments of waiting or idle time for learning, by reading small pieces of data, doing quizzes or using forums or chat
- **Simple, funny and added value functionality**  
It should be possible to use an m-learning system without reading a user manual, and the experience of studying with the help of such devices should be interesting and engaging
- **Area/Domain specific content, delivered just in time/place**  
The mobility should bring the ability to guideline and support students and teachers in new learning situations when and where it is necessary.

## A General M-Learning Architecture

- Discovery of context
- Content management and specific adaptations
- Support for disconnected operation



## Future directions



## Conclusions

- E-learning systems and Learning Management Systems are nowadays a key element in the learning processes
- M-learning is often considered as the future of learning as an integral part of any other form of educational process
  - *How to best perform the same action in a changed environment?*
  - *What actions are best suited to new conditions?*